

2025 - ALTERED TIDES

Melt 1-3 – (£1200 each)

Medium

Acrylic, photographic print, melting ice, paint

Size

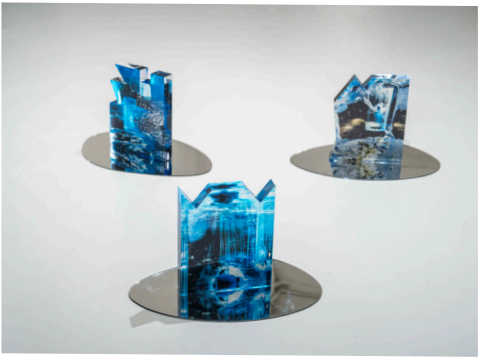
H: 21 x W: 17 x D: 3 cm

Year

2025

Description

Capturing images from melting artwork, this trilogy highlights the devastating consequences for coastal communities and ecosystems as meltwater adds to sea level rise.



“Darling, it’s better down where it’s wetter” – (£3800)

Medium

Resin, paint, water

Size

H: 85 x W: 43 x D: 43 cm

Year

2025

Description

This striking work acts as the protector of the sea.



Crambe Marítima – (£4000)

Medium

Steel, resin, paint

Size

H: 83 x W: 46 x D: 46 cm

Year

2025

Description

Hiding in plain sight Crambe Maritima is disguised with shimmering fish scales



Spawn – (£3400)

Medium

Resin, paint, ostrich feather spine, glass

Size

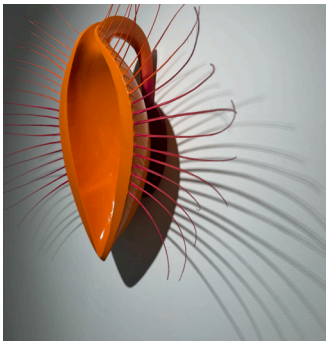
H: 60 x W: 90 x D: 16 cm

Year

2025

Description

A glistening reproductive hybrid - part human, sea creature and mammal.



Fishbone Friends – (£5000)

Medium

Resin, paint, ostrich, glass

Size

H: 147 x W: 110 x D: 84 cm

Year

2025

Description

Part human, part fish skeleton Fishbone Friends speaks of the demise of species as a result of over-fishing.



The Buoyz – (L: £2400, S: £1200 each)

Medium

Resin, paint

Size

H: 43 x W: 25 x D: 17 cm

H: 22 x W: 12 x D: 3.5 cm

Year

2025

Description

Deadly and poisonous for unsuspecting human prey



Fractured – (£5000 excluding boulder)
Medium
Curved aluminium, paint, stalactite boulder
Size
H: 119 x W: 160 x D: 0.2 cm
Year
2025
Description
As ice melts and fractures we look for ways to repair and renew



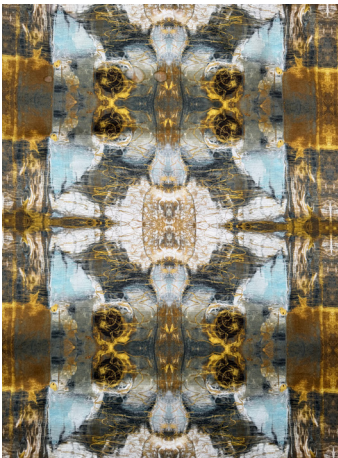
Neptune and Salica – (£2400 each)
Medium
Resin, paint, ostrich, glass
Size
H: 147 x W: 110 x D: 84 cm
Year
2025
Description
Neptune, the god of the sea, was married to Salacia, the goddess of saltwater. Salacia, overwhelmed by Neptune’s presence, initially hid from him in the Atlantic Ocean. Neptune, seeking to win her over, sent a dolphin to persuade her to return and share his throne.



Future Fossils 1-3 – (£3600 each)
Medium
Plaster, glass, paint
Size
H: 58 x W: 35 x D: 9 cm
H: 60 x W: 28 x D: 11 cm
H: 57 x W: 28 x D: 12 cm
Year
2025
Description
Enveloping parts of the human body, these fossils once bleached and parched emerge anew.



Swash & Ebb – (£1300 excluding iron supports)
Medium
Printed silk, photographic image of melting ice, paint, iron
Size
H: 140 x W: 100 x D: 0.1 cm
H: 5 x W: 52 x D: 7 cm (Iron waves)
Year
2025
Description
From sandy beaches to blue coves



Tentilla – (£1300)
Medium
Plaster, steel, sea glass, salt, poppy seed.
Size
H: 80 x W: 21 x D: 12 cm
Year
2025
Description
This headless creature attempts to navigate the ocean floor



Daughter of the Ocean – (£2300)
Medium
Steel, plaster, sea urchin spine
Size
H: 44 x W: 69 x D: 29 cm
Year
2025
Description
Taking inspiration from the legends of sirens Daughter of the Ocean also relates to Hindu mythology signifying Lakshmi, the goddess of wealth and prosperity, who emerged from the ocean during its churning.



Splat – (£2000)
Medium
Plaster, kelp, nori, ostrich feather spine, glass
Size
H: 110 x W: 80 x D: 18 cm
Year
2025
Description
Bringing to life sea vegetation and disguised as seaweed



Porifera – (£1600)
Medium
Plaster, sea sponge, shell remnants, palm fingers, salt, hibiscus
Size
H: 78 x W: 30 x D: 11 cm
Year
2025
Description
Equipped with legs, Porifera is released from the confines of the ocean



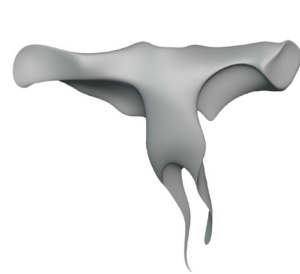
Heads or Tails – (£2200)
Medium
Resin, steel, glass
Size
H: 35 x W: 50 x D: 10 cm
Year
2025
Description
Deep-sea fish have evolved unique features to survive in the dark depths, including large, sometimes bulging eyes, With alien-like and bulging features, the eyes of deep-sea fish have evolved to suit various underwater environments, with some adapted for low-light conditions or even ultraviolet vision.



Medusa's Revenge – (£1800)
Medium
Plaster, resin, human hair
Size
H: 25 x W: 80 x D: 80 cm
Year
2025
Description
Medusa returns as a sea creature to avenge Neptune for raping her.



Remains 1 – (£1000)
Medium
Resin, wax
Size
H: 12 x W: 11 x D: 3 cm
Year
2025
Description
Homage to the Hammerhead



Remains 2 – (£1600)
Medium
Resin, wax
Size
H: 11 x W: 9 x D: 9 cm
Year
2025
Description
Homage to the Puffa



Female Gaze – (£1600 each)
Medium
Palm Slings, plaster
Size
H: 175 x W: 25 x D: 25 cm (variable)
Year
2025
Description
This work speaks of women as subjects with agency, complexity, depth and beauty



2024 - NATURE IS A CYBORG

Luciferina – (£5000 including base)
Medium
Steel, plaster, flocking, quartz, jute, LED lights. Base: resin, paint, sound
Size
H: 200 x W:120 x D:120 cm
Year
2024
Description
Luciferina: inspired by the glow of fireflies, utilises photosynthesis to emit light for renewal and growth.



Officina – (£5000 including base)
Medium
Sculpture: steel, wasp hive, melted thermo plastic. Base: resin, paint, diffuser, Oud, Sound
Size
H: 200 x W: 100 x D: 100 cm
Year
2024
Description
Officina: a hermaphroditic sensual being, exudes a calming aura of healing by releasing the scent of Oud.



Cacturon – (£6000 including base)
Medium
Sculpture: steel, flocking, Banksia pod, resin. Base: resin, paint, pump, Raspberry Pi, sound
Size
H: 180 x W: 200 x D: 100 cm
Year
2024
Description
Cacturon: towering and vibrant, serves to hydrate and repair with its dripping water and plant-like features.



Mucro – (£5000 including base)
Medium
Sculpture: plaster, paint, Ostrich quill. Base: resin, paint, fans, speaker, Raspberry Pi, sound.
Size
H: 200 x W: 160 x D: 80 cm
Year
2024
Description
Mucro: with its juxtaposed organic and sharp elements, symbolises purification.



RoolT – (£5000 including base)
Medium
Sculpture: steel, plaster, crinolene. Base: resin, paint, pump, speaker, Raspberry Pi, sound.
Size
H: 180 x W: 200 x D: 100 cm.
Year
2024
Description
RooolT: embodies resilience and renewal, emitting a nutritious fluid to enrich the soil.



2023 – TRIFFIDS/PROXIMITY

Predator 1 – (£4000)

Medium

Foam, pulp, steel

Size

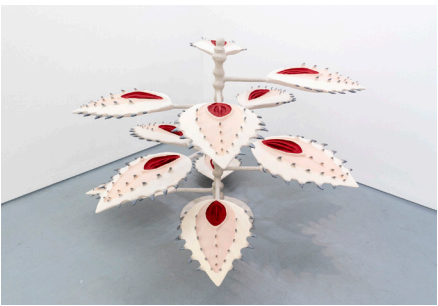
H: 152 x W: 182 x D: 182 cm.

Year

2023

Description

With references to eco-feminism, this sculpture presents a glorious plant depicting untouchable female genitalia



Predator 2 – (£4000)

Medium

Resin, aluminium powder

Size

H: 132 x W: 60 x D: 60 cm

Year

2023

Description

Predator 2: at once phallic and dentate, merges human and non-human



Evolution – (£2200)

Medium

Illustrations, CNC Milled

Size

H: 95 x W: 50 x D: 15 cm

Year

2023

Description

Pictorial illustrations inspired by fauna, flora and fungi alludes to preserved remains from a near future or perhaps a distant past, enacting a temporal rewilding of history to reveal alternatives that might have happened, or perhaps could still come to pass



MUTE – (£4000)

Medium

Steel, pulp, glue

Size

H: 121 x W: 60 x D: 15 cm

Year

2023

Description

This hearing, walking plant reminds us of our similarities in nature and questions our notions of power



INHUMANA – (£4000)

Medium

Foam, resin, paint

Size

H: 60 x W: 182 x D: 152 cm

Year

2023

Description

With seed pods and germination at risk from climate change, Inhumana represents the pod as a robust, sentient predator. Whose boat-like features enable it to travel further afield, disguised in the neutral tones of marble - historically attributed with symbolic manifestations of immortality



Eco-Alien Family – (£3000)

Medium

Resin, pods, shower head, steel thorns, wood

Size

Largest figure H: 152 x W: 60 x D: 30 cm

Smaller figures H: 112 x W: 63 x D: 30 cm

Year

2023

Description

Eco-Alien Family compels us to confront the limitations of our human-centric perspectives and the possibilities that arise from modes of affiliation and connectedness across species



GONE – (£5000 for both)
Medium
Jesmonite
Size
H: 152 x W: 60 x D: 30 cm
H: 112 x W: 63 x D: 30 cm
Year
2023
Description
Taking its inspiration from cactus, this work speaks of bodily fossils, that of mother and child



PAPHIES – (£3500 for both)
Medium
Pulp, steel, wood, thermo-plastic
Size
H: 300 x W: 70 x D: 35 cm
H: 260 x W: 63 x D: 30 cm
Year
2023
Description
Drawing inspiration from the Paphiopedilum orchid, Paphies depicts the species with human-like legs, enabling it to liberate itself from risk of extinction



Auricle – (£3200)
Medium
Resin, silver leaf, fibre optics
Size
H: 72 x W: 55 x D: 55 cm
Year
2023
Description
Auricle explores the concept of plant consciousness



2022 – SYMBIOSIS

TOTEMS 1-4
Year
2022
Description
These voluptuous, totemic plants speak of our shared reproductive systems

No1 – (£4000 including base)
Medium
Jesmonite, paint, granite boulder
Size
84 x 17 cm, boulder 51 x 30 cm
No2 – (£4600 including base)
Medium
Bronze resin, paint, granite boulder
Size
191 x 15 cm, boulder 83 x 53 cm
No3 – (£4000 including base)
Medium
Bronze resin, paint, curled branch, granite boulder
Size
64 x 16 cm, granite boulder 60 x 60cm
No4 – (£4000 including base)
Medium
Bronze resin, paint, clear resin top cast from Casava vegetable, granite boulder
Size
76 x 20 cm, granite boulder 61 x 42 cm



Black Tears
Medium
Video
Year
2022
Description
Mourning the Anthropocene a collaboration with Blanca Regina



Splayed – (£2200)
Medium
Resin, paint, silk
Size
H: 38 x W: 79 x D:18 cm
Year
2022
Description
Both human and plant with reproductive references



Ovarium – (£2200)
Medium
Resin, paint, wool needle felting
Size
H: 62 x W: 42 x D:12 cm
Year
2022
Description
Both human and plant with reproductive references



ANNIE TREVORAH – WORKS INVENTORY
annie@annietrevorah.com; 07703 459494
www.annietrevorah; @annietrevorahsculptor